

PRIMO DER DIAGONAL-ROHRVENTILATOR

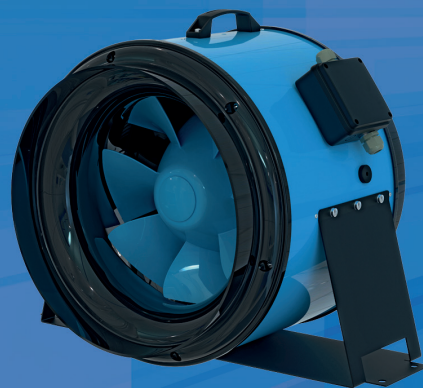
MIT EC- UND AC-MOTOR



PRIMO (EC) 200



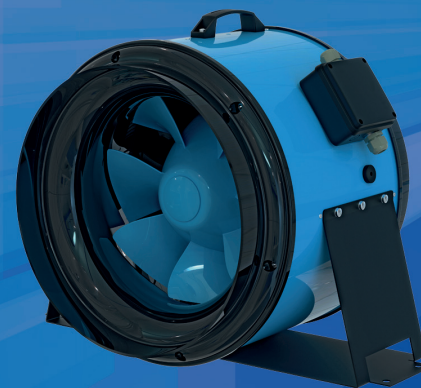
AC-Motor: 1.140 m³/h
EC-Motor: 1.250 m³/h



PRIMO (EC) 355



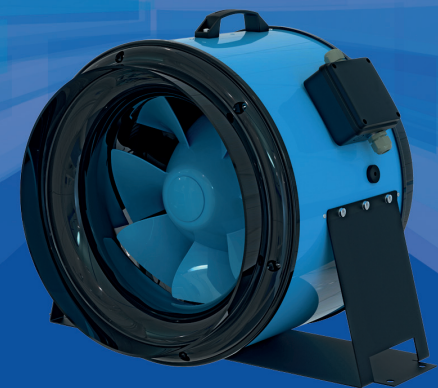
AC-Motor: 2.485 m³/h
EC-Motor: 3.685 m³/h



PRIMO EC 355 MAX



-
EC-Motor: 4.630 m³/h



PRIMO (EC) 400



AC-Motor: 3.350 m³/h
EC-Motor: 5.700 m³/h